

## Precision at a glance.

The ECR-455 is a premium marine-grade navigation display unit crafted to receive, process and visualize critical dept and GNSS data. Designed as a bridge and common used areas for display echo sounder and GNSS sources. It operates continuously in harsh maritime environments.



## Intelligent visibility.

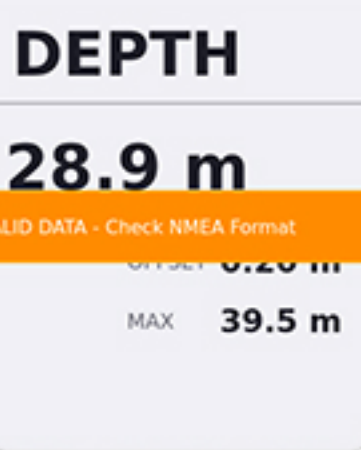
### Adaptive Visualizations

Seamlessly switch between high-contrast numeric layouts, depth trend graphs, and smooth analog displays.



### Real-Time Data Validation

Instantly detects data interruptions or formatting errors with prominent, color-coded visual warnings to ensure navigational safety.



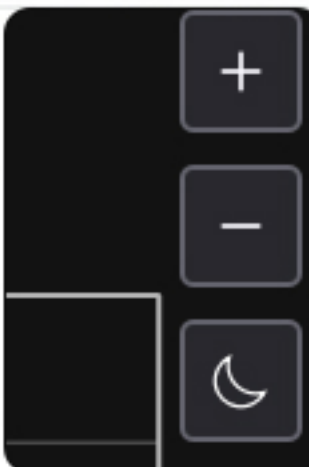
### Seamless Data Logging

Record precise NMEA 0183 streams directly to a secure front panel USB with precise timestamps for post-voyage analysis. (USB required.)



### Day & Night Operation

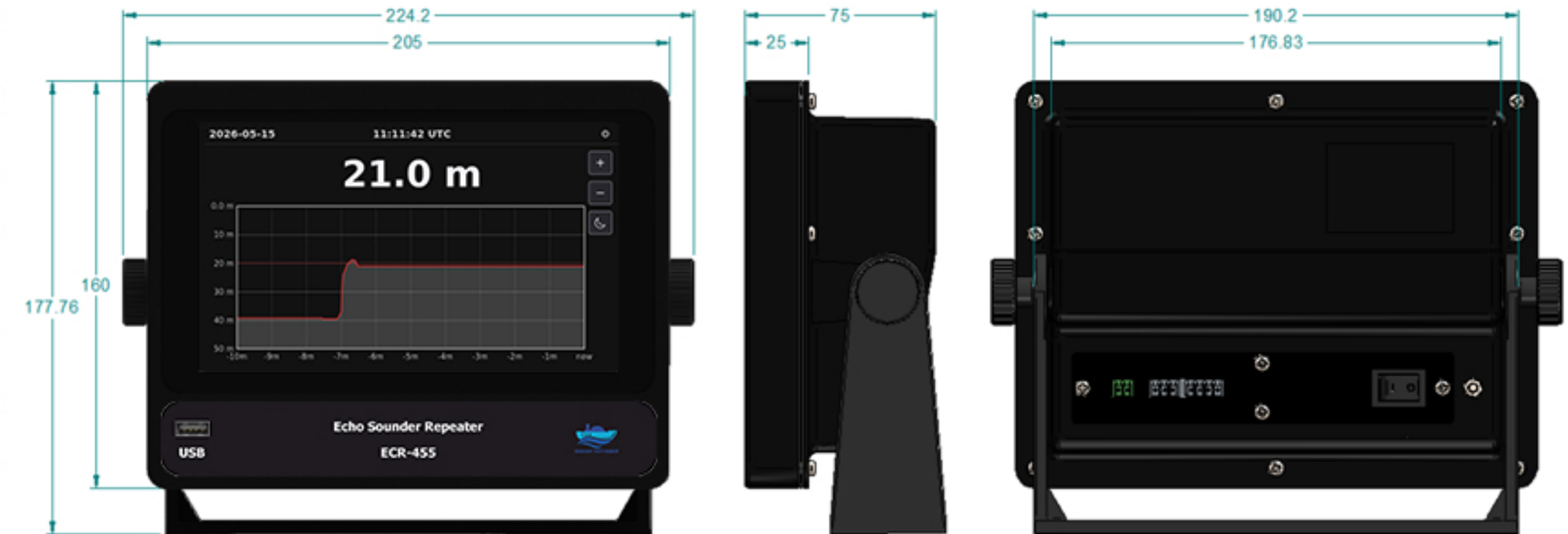
Instantaneous, one-touch brightness and theme adaption guarantees optimal screen readability under any bridge lighting condition.



## Uncompromising architecture.

<b>Power Supply</b>	<b>Voltage Range:</b> 6VDC to 36VDC (Marine-grade 24V DC optimized) <b>Consumption:</b> 2-4W
<b>Data Interfaces</b>	<b>Inputs:</b> 1x RS-232, 1x RS-422 (Long-distance/noise-resistant) <b>Format:</b> NMEA 0183
<b>Supported Sentences</b>	<b>Depth:</b> DBK, DPT, DBS, DBT <b>Navigation:</b> GLL, GGA, VTG, ZDA, RMC
<b>Data Logging</b>	<b>Storage:</b> Front panel USB Port <b>Format Requirement:</b> NTFS file system supported
<b>Hardware Protection</b>	<b>Electrical:</b> Reverse polarity protection <b>Ports:</b> Optically and electrically isolated against marine disturbances

## Engineered for the elements.



### Dimensions

224.2mm (W) x 177.7mm (H) x 75.0mm (D)  
7 inch Display

### Mounting System

Adjustable, vibration-resistant marine bracket for versatile console or desktop bridge installation.

### Environment

Built for continuous exposure. Requires a 90 cm safe magnetic compass distance. Optically protected against marine